

*Scaf-Lite*TM

provides . . .

Total Site Protection !



888.692.2490



www.eagleencl.com

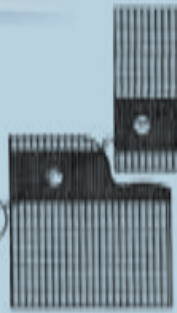
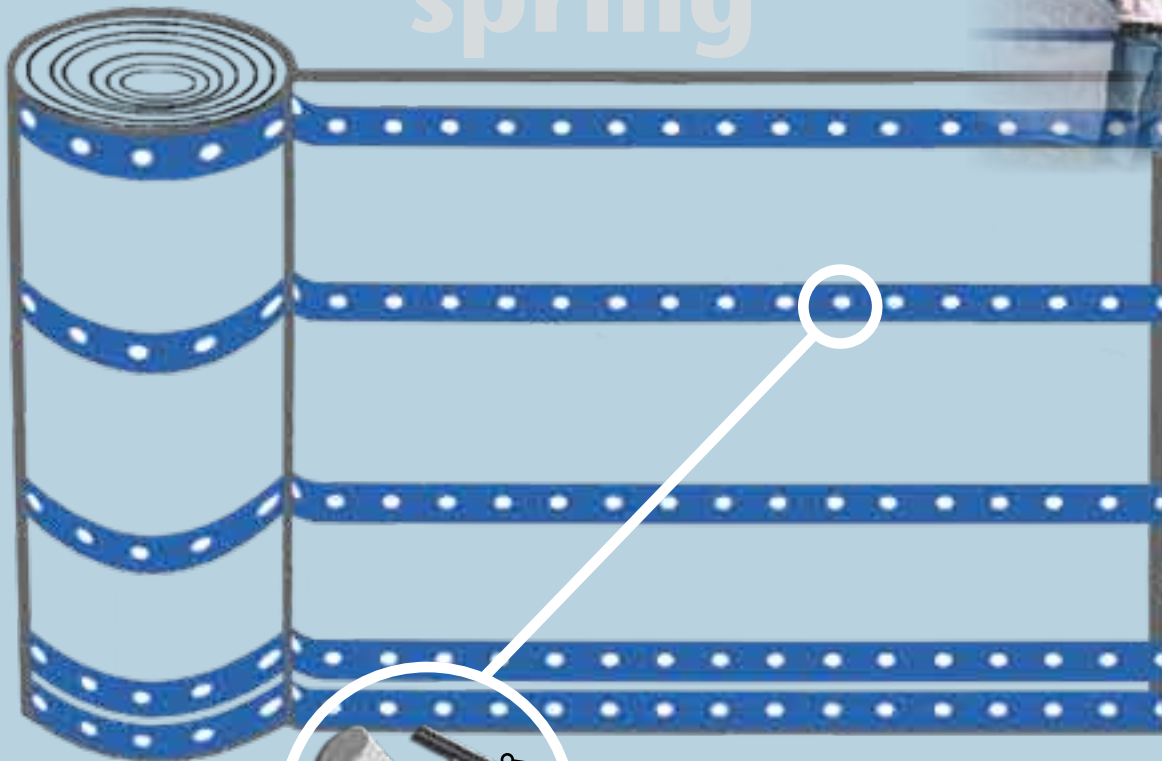
- Horizontal installation works best
- Tape overlaps for a heated enclosure
- Retain heat during winter
- Capable of withstanding extreme winds



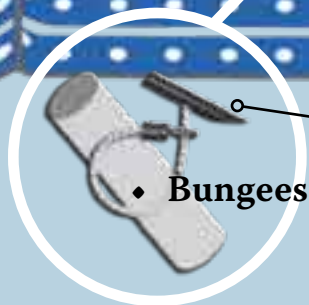
*Work during harsh weather!
Scaf-Lite™ Retains Heat!*



winter spring



Approx. 50 per 1,000 sq



• Bungees

APPROX. 200 per 1,000 sq. ft.

Scaf-Lite™ Shee



- Durable and Lightweight
- Attaches to any scaffold structure
- Use flexible BUNGEE TIES for easy installation



Scaf-Lite™ Easy to Install!

summer
fall

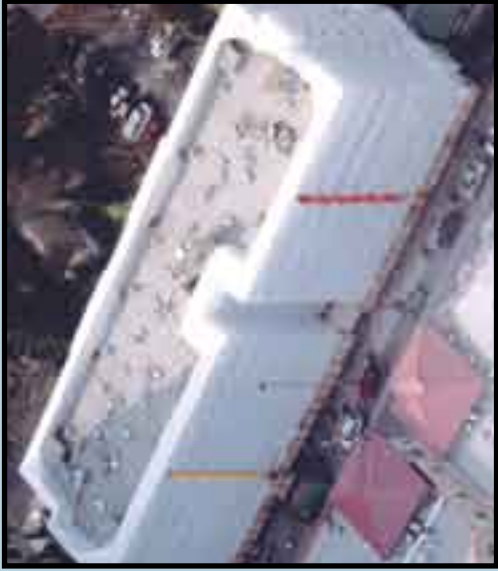
Physical Properties	Scaf-Lite Scaffold Sheeting	Roll Sizes	
Dimensions		7' 4" x 136'	13' x 100'
Color	Flame Retardant Transparent w/White Scrim	Yes	Yes
	Non-Flame Retardant Clear w/White Scrim	Yes	Yes
Shipping Weight	Per Roll (approx.)	65 Lbs.	71 Lbs.
Film Thickness	(Excluding scrim/webbing)	10 mil.	9 mil.
Reinforced Webbing	Reinforced Web Straps Welded to Each Roll	1 DoubleRow / 3 Single	1 Double Row / 4 Single
Pre-punched Eyelets	Pre-punched Eyelets Along Each Web Strap on 4" Centers	2,400 +/-	1,800 +/-
Temperature	All Materials Work Well From -40°F. to +176°F.	Yes	Yes

ft.

Re-use Scaf-Lite™!

- Worker Comfort/Environmental Safety
- Negative Pressure Enclosures
- Dust & Debris Containment
- Heated Enclosures

eting does it all !



Scaf-Lite™



Poly

	<u>Quantity</u>	<u>Unit Price</u>	<u>Total</u>
Square feet	_____		
Scaf-Lite™ Rolls	_____	\$ _____	\$ _____
Bungees *	_____	\$ _____	\$ _____
Screw-loc's *	_____	\$ _____	\$ _____
Labor *	_____	\$ _____	\$ _____
Total Cost			\$ _____
Price Per Square Foot			\$ _____
<i>(Total Cost / sq.foot)</i>			

Scaf-Lite™

Poly

Bottom Line \$ _____

*** NATIONAL AVERAGES**

- Bungee 200 bungees per 1,000 sq/ft.
- Screw-Locs 50 per 1,000 sq/ft.
- Man Hours 4.5 hrs . per 1,000 sq/ft.
- Labor rate \$50.00 per hr. / .225¢ per ft.
- Wind Clips 120 per 2,000 sq/ft.
- Poly Replacement Average 2 Times

	<u>Quantity</u>	<u>Unit Price</u>	<u>Total</u>
Square feet	_____		
Rolls	_____	\$ _____	\$ _____
Wind Clips* / Tie Wire	_____	\$ _____	\$ _____
2x4 Studs / Furring Strips	_____	\$ _____	\$ _____
Labor	_____	\$ _____	\$ _____
Net Cost			\$ _____
Plus Replacement Cost *			\$ _____
Total Cost			\$ _____
Price Per Square Foot			\$ _____
<i>(Total Cost / sq.foot)</i>			

\$ _____ /sq. ft.

\$ _____ /sq. ft.

_____ /sq. ft.



P.O. Box 10652 • New Orleans, LA 70181
 Phone: 504.733.3525 • Fax: 504.818.0178
 Toll Free: 888.962.2490 • www.eagleenc.com

Scaf-Lite™ Saves Money!